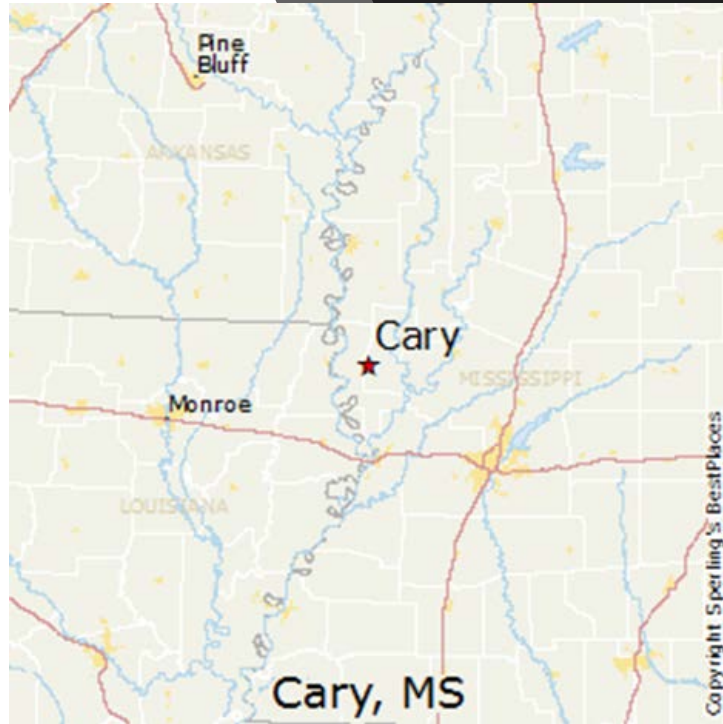




Farming After the Flood – A Growers Perspective

Jeffry Mitchell, Farmer
Moore Company

Cary, MS



- 6200 Acres
- Corn, Soybeans, and Catfish
- 5th Generation Farmer
- Land been farmed since 1880

On a Normal
Year.....



**EARLY MARCH, CORN
PLANTING ~1800-2500
ACRES**



**EARLY-MID APRIL,
SOYBEAN PLANTING ~4000
ACRES**



**CATFISH: 700 ACRES OF
PRODUCTION PONDS**



Tillage

- Terra Till
- Chisel Plow
- Field Cultivator
- Disc
- Bedder



Burndown

- Roundup
- 2,4-D
- Valor
- Select Max




Corn

- 30" Rows
- Plant Population Variety Specific: 34-38K
- E sets, 1725 MaxEmerge 5 (16 Row)
- Starter 5 GPA, Split Side-Dress, Tassel Shot
- Herbicide: Halex GT, Lexar
- Irrigation: Furrow
- Harvest



Soybean

- 30" Rows
- Plant Population Variety Specific: 130K
- 1725 MaxEmerge 5 (16 Row)
- Herbicide: Preemerge/Layby
- Fungicide
- Irrigation: Furrow/Pivot
- Harvest

A photograph of a coastal wetland or marsh area. The foreground and middle ground are dominated by shallow, muddy water channels and patches of green vegetation. In the background, there is a dense line of trees under a clear sky. A large, semi-transparent white circle is overlaid on the left side of the image, containing text.

Normal Backwater

-
- **Some level every year**



2019 Backwater

- 6000 acres under water
- 300 acres Soybeans planted



Pictures From The Flood

Pictures From The Flood

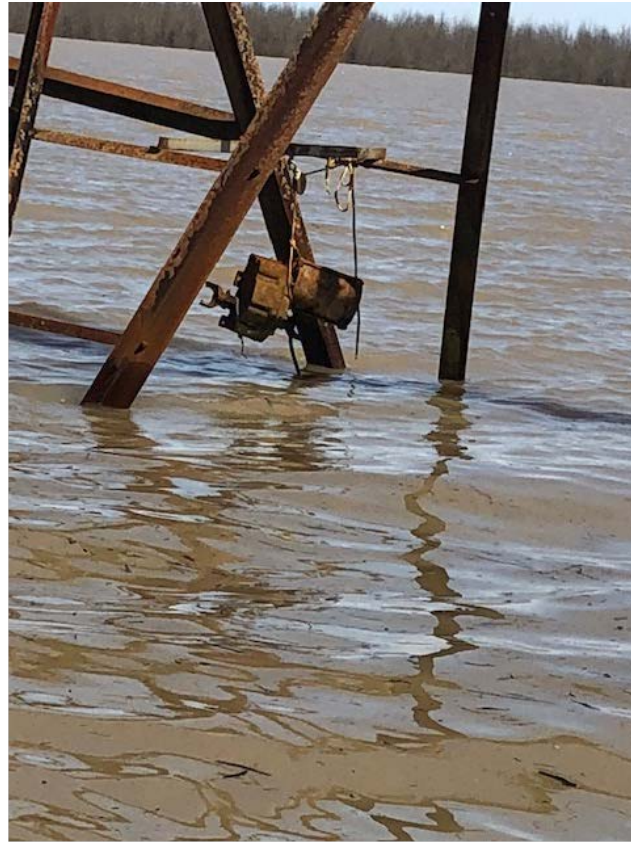




Pictures From The Flood



Pictures From The Flood



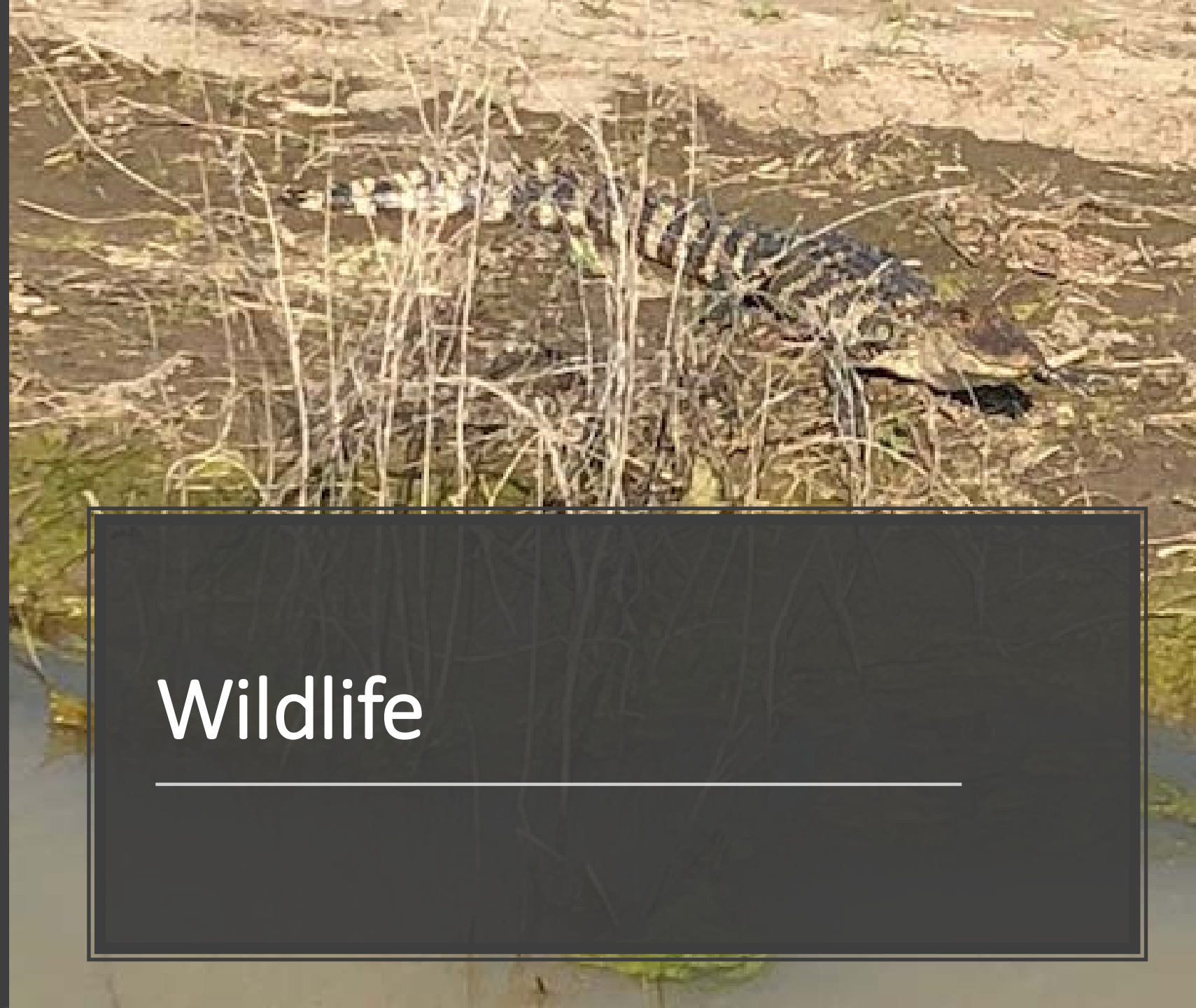
Pictures From The Flood



Pictures From The Flood

Pictures From The Flood





Wildlife



Wildlife



Pictures From The Flood



Better Times Coming

Thank You

Finish the Pumps!!!

