



MAKING CONSERVATION PAY

Ryan Mann
Mississippi State University



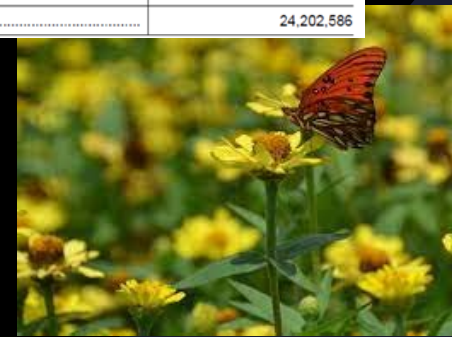
Targeted Conservation

- Target areas in row-crop fields with traditional low profitability
- Hot spot, flood prone areas, soil type, nooks of field margins
- Increase whole-field profitability
- Ecosystem services
- Increased wildlife habitat



Bridging the Gap

- Working lands programs allow landowners to enroll specific areas in fields, continue production
- Numerous practices available
 - Riparian
 - Grassland
 - Wetlands
 - Pollinators
- Design program enrollment based upon objectives
- Raise overall yields and lower break even points



Conservation Practices on Active CRP Contracts		
Practice code	Practice	Acres
CP1	Introduced grasses and legumes	3,300,553
CP2	Native grasses	6,280,904
CP3	Tree planting	959,416
CP4	Wildlife habitat with woody vegetation	1,916,100
CP5	Field windbreaks	92,326
CP6	Diversions	18
CP7	Erosion control structures	19
CP8	Grass waterways	126,346
CP9	Shallow water areas for wildlife	29,490
CP10	Existing grasses and legumes ¹	4,018,927
CP11	Existing trees	376,490
CP12	Wildlife food plots	48,158
CP15	Contour grass strips	63,628
CP16	Shelterbelts	34,445
CP17	Living snow fences	6,566
CP18	Salinity reducing vegetation	220,412
CP21	Filter strips (grass)	838,057
CP22	Riparian buffers (trees)	811,407
CP23	Wetland restoration	1,053,132
CP24	Cross wind trap strips	98
CP25	Rare and declining habitat	1,556,229
CP26	Sediment retention	63
CP27	Farmable wetland pilot (wetland)	92,062
CP28	Farmable wetland pilot (upland)	206,844
CP29	Wildlife habitat buffer (marginal pasture)	120,375
CP30	Wetland buffer (marginal pasture)	43,521
CP31	Bottomland hardwood	130,456
CP32	Hardwood trees	9,075
CP33	Upland bird habitat buffers	257,160
CP34	Flood control structure	69
CP35	Longleaf pine	139,294
CP37	Duck nesting habitat	300,415
CP38	State acres for wildlife enhancement	1,016,323
CP39	FWP--Constructed wetlands	381
CP40	FWP--Aquaculture wetlands	17,166
CP41	FWP--Flooded prairie wetlands	43,750
CP42	Pollinator Habitat ²	92,953
Total		24,202,586

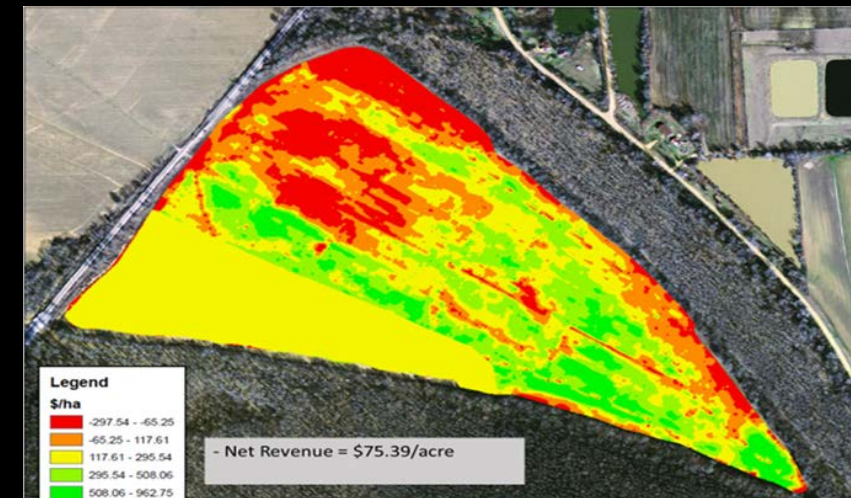
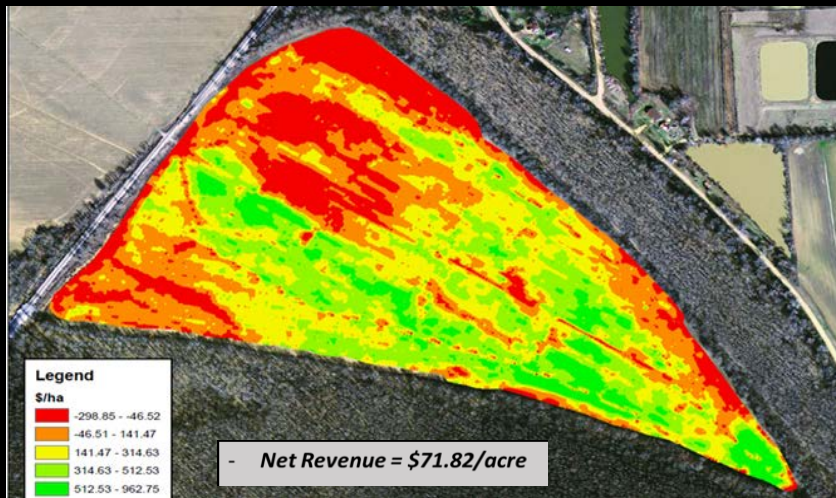
Targeted Conservation Approach

- Use precision ag technology to better inform Farm Bill program enrollment
- Target areas of row-crops fields where conservation can be linked to profit
- Visualize conservation planning scenarios and payments



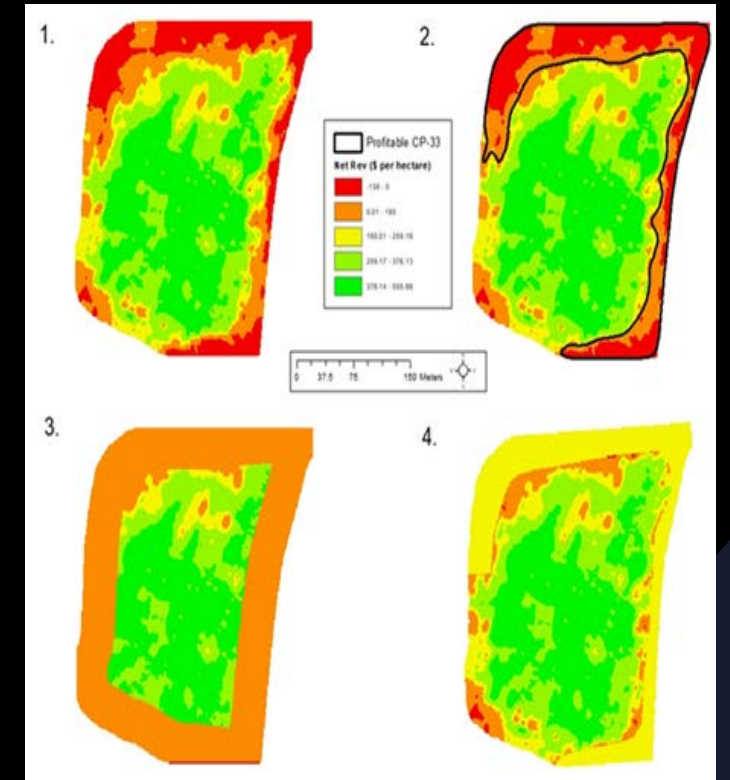
Economic Opportunities

- “If it doesn’t make money, it doesn’t make sense”
- Identify areas where conservation is compatible with profitability
- Meet economic and environmental objectives
- Use conservation programs as economic tools



Targeted Conservation Tool

- Identify acreage eligible for Farm Bill conservation enrollment
- Site specific yield data analysis
- Generate profitable/targeted conservation areas
- Ensure conservation is profitable, even across varying commodity prices
- Illustrate the economic opportunities and outcomes of Farm Bill conservation programs
- Average of 24% increase in whole-farm profitability



The Next Step?

- Schedule a site visit on your farm
 - Its free!
- Individual licenses available soon through MSU
- Form your precision conservation plan
- Enroll





Contact:

Ryan Mann

Research Associate- Mississippi State University

E-mail: rtm143@msstate.edu

Cell: (662) 312-6812

