

# Common Whiteflies in San Joaquin Valley Cotton



## Bandedwing Whitefly

Adults with bands on wings

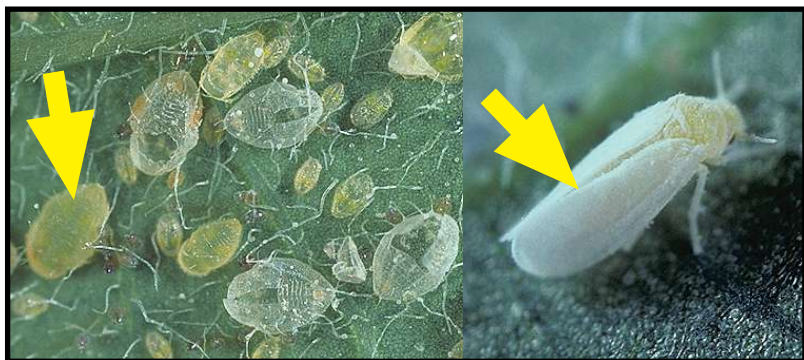
Immatures with fringe on edge



## Greenhouse Whitefly

Adults with white wings

Immatures with fringe on edge



## Silverleaf Whitefly (Sweetpotato Type B)

Adults with white wings, wings held at an angle so yellow body can be seen from above

Immatures with smooth edges, no fringe



## Iris Whitefly

Iris whitefly adults have two dots or "smudges" on the wings and are quite waxy, leaving white wax on the leaf. Nymphs have fine fringe around the edge but lose it as they mature.



The University of California prohibits discrimination against or harassment of any person employed by or seeking employment with the University on the basis of race, color, national origin, religion, sex, physical or mental disability, medical condition (cancer-related or genetic characteristics), ancestry, marital status, age, sexual orientation, citizenship, or status as a covered veteran (special disabled veteran, Vietnam-era veteran or any other veteran who served on active duty during a war or in a campaign or expedition for which a campaign badge has been authorized).

University Policy is intended to be consistent with the provisions of applicable State and Federal laws.

Inquiries regarding the University's nondiscrimination policies may be directed to the Affirmative Action/Staff Personnel Services Director, University of California, Agriculture and Natural Resources, 1111 Franking, 6th Floor, Oakland, CA 94607-5200 (510) 987-0096.



All photos by Jack Kelly Clark, copyright UC Regents  
Compiled by Peter B. Goodell  
UC Division Agricultural and Natural Resources