

BASIC DATA FLOW AND REQUIREMENTS

FOR RFID DATA BETWEEN JOHN DEERE AND
ECOTTON GIN

Tom McCune and Scott Pinto
EWR, Inc.

TOPICS

- Retrieving John Deere RFID data from the eCotton software
- CottonHost
- MyModules
- Module Dispatcher

REQUIREMENTS FOR JOHN DEERE RFID



- Producer uses the same producer ID and Farm ID in their John Deere picker as the gin uses in eCotton software
- Producer authorizes the gin to receive data in the John Deere Portal
- eCotton software authorization with John Deere Portal
- CottonHost
- Marrying data requires scanning equipment and eCotton RFID Module

RFID DATA FLOW



1. Picker transmits data or data is uploaded via USB drive to John Deere depending on picker model
2. eCotton Software pulls data through CottonHost from John Deere
3. Module RFID is scanned at the gin and John Deere data is married with load data

AUTHORIZING ECOTTON TO RECEIVE JOHN DEERE DATA

Gin - System Parameters

Invoice | CCC Loan/LDP | Statement/Ticket Report Layout

Company | Defaults | Preferences | Entry Ranges | Charges | **Interface** | Accounting | Recap/Pricing

Import From Remote Bale Entry

Remote Entry Program: eCotton

Update Method: Hard Drive

Source Drive: Z:

Activate Loads:

Estimated Avg. Turnout: .

EWR Parameters

Destination Path: C:\EWRFILES\ Browse...

Report Detail:

Bank Account #:

EWR Holder ID:

Auto Run IRIS: Layout Setup

CottonHost

Allow Gin Performance Summary:

Synchronize Load/Module Info:

Polling Interval (Minutes): 2

Module Tag Identifier:

Password: *****

Entity Backup Settings

Backup Drive: c:\gin\ Browse...

Intelligin Options

Use Intelligin:

Gin Messenger IP Address:

Generate Outbound Classing:

AutoSend with STAMP:

Use Gin for AIRMail Classing: Ask

Send Module Averaging File When Retrieving Classing?

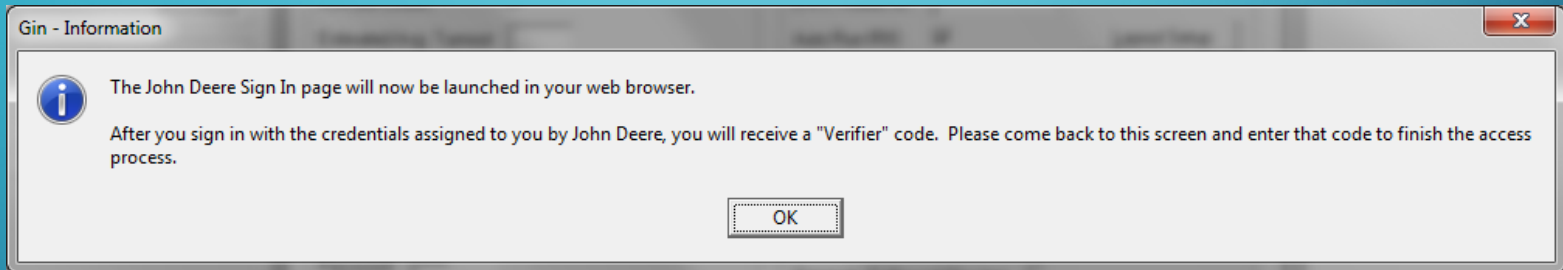
RFID Server IP Address: . . .

John Deere Harvest ID

Request Access

Save | Cancel | Previous | Next

AUTHORIZING ECOTTON TO RECEIVE JOHN DEERE DATA



JOHN DEERE SIGN IN PAGE

JOHN DEERE MyJohnDeere

Sign in to MyJohnDeere

Username
coastalgin
▶ Forgot username?

Password
.....
▶ Forgot password?

PIN For John Deere Financial customers only.
.....
▶ Don't have a PIN?

SIGN IN Remember Me

Not registered? [Create New Account](#)

▶ Help Signing In? ▶ Notifications (0)
Your use of this site is governed by our [Terms of Use](#)

Your gateway to better business decisions

MyJohnDeere makes it simple to access secure John Deere web applications:

- Locate John Deere Financial information.
- Collect and analyze machine and agronomic information.
- Manage all your John Deere technology subscriptions.
- Search for parts solutions—including inventory and pricing—then place orders.
- Reduce the number of user IDs and passwords needed to access your applications.
Register today.

CREATE ACCOUNT

LEARN MORE

Site Map | Privacy and Data | Cookie Settings | Legal | Accessibility | Contact Us
Copyright © 2017 Deere & Company. All Rights Reserved.

[f](#) [t](#) [y](#) [in](#) [i](#)

JOHN DEERE SIGN IN PAGE

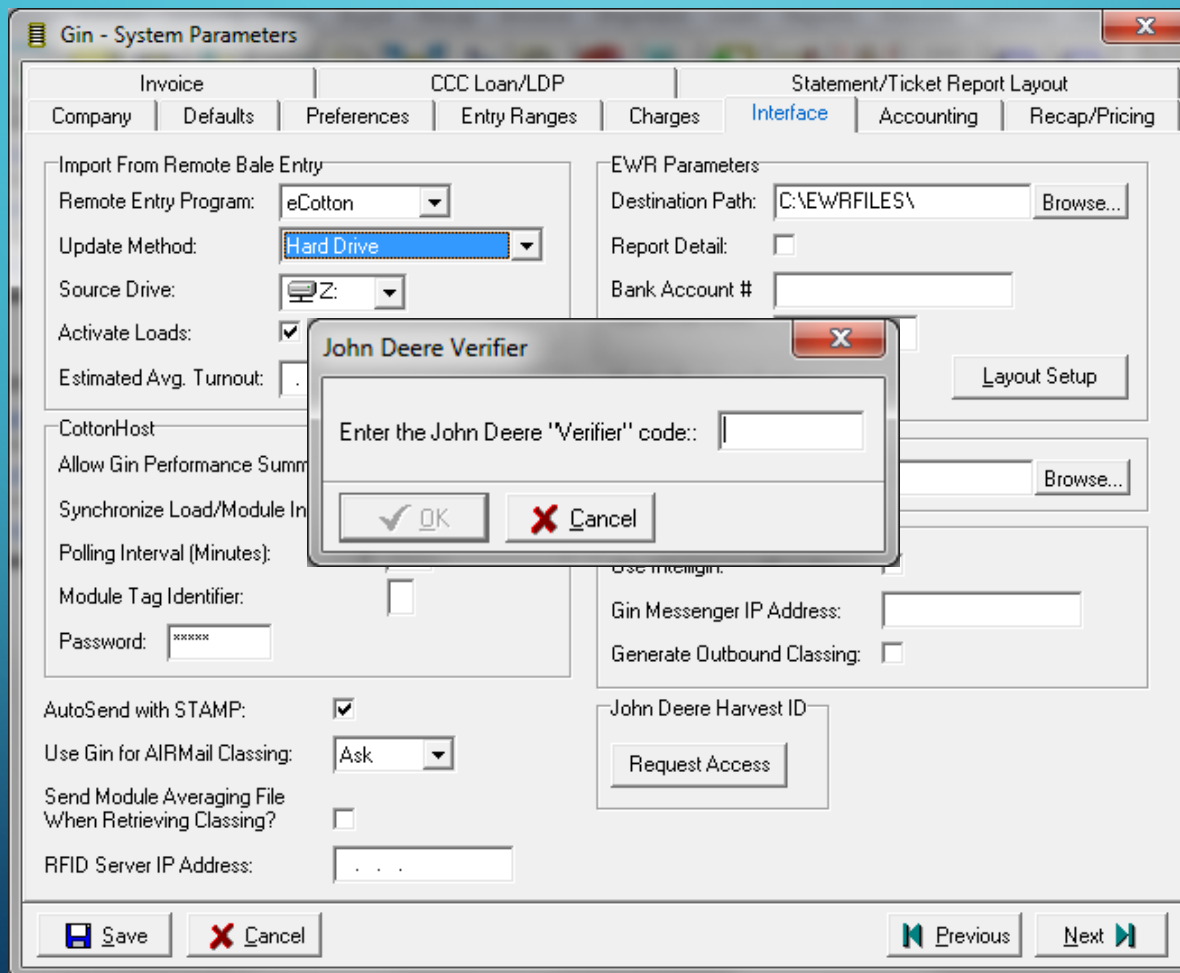
Success!

Now, enter the verifier code [REDACTED] into The eCotton Gin System.

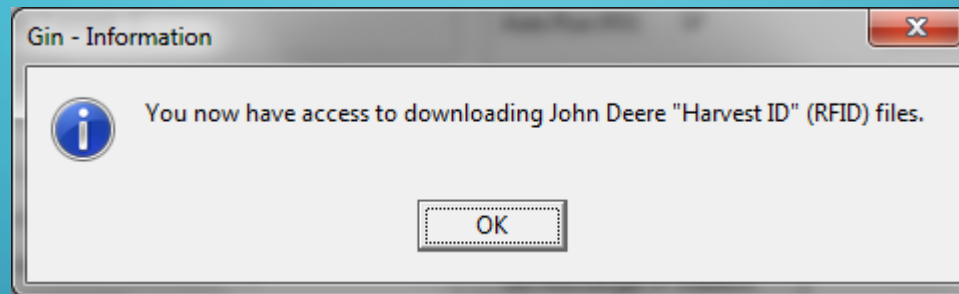
If anyone asks, your OAuth Request Token is [REDACTED]

Copyright © 2011-2017 Deere & Company. All rights reserved.

ENTERING VERIFICATION CODE INTO ECOTTON SOFTWARE



ENTERING VERIFICATION CODE INTO ECOTTON SOFTWARE



DOWNLOADING THE JOHN DEERE RFID DATA

Gin - Load Call-In "Book"

Settings

- Module ID Same As Load Number?
- Automatically Make Loads?

Totals

Total Queued1

Total Dispatched

Total Modules1

Load Filters

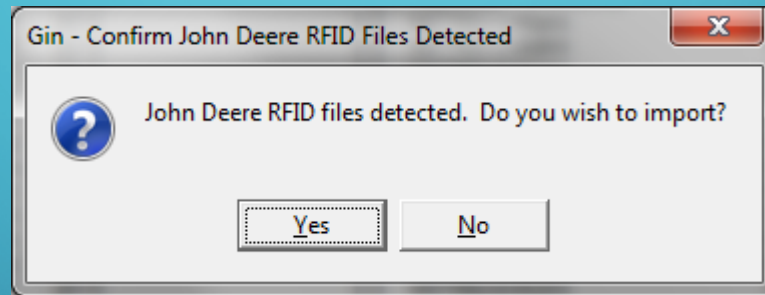
- Pending (not yet delivered)
- Pending for current producer
- All loads (including picked up)
- All loads for current producer

Directions Make Load Dispatch Weigh In Map It Insert Edit Delete

Date Made	Time	Prod ID	Farm ID	Field ID	Module ID	Rolls	Load#	Status	Notes	GPS?
05/15/2017	13:05	PRDD01	15973	FIELD 14	4653V			Queued		<input checked="" type="checkbox"/>

Save Close Find Print

DOWNLOADING THE JOHN DEERE RFID DATA

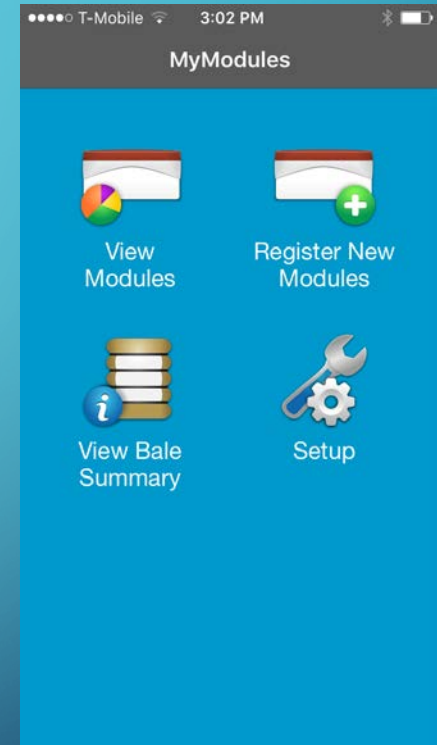


COTTONHOST

- Website that provides access to gin production data for producers
- Dynamically generate, view, and download reports based on current gin production data
- Subscribed to by the gin

MYMODULES

- Mobile app that allows producers to register modules in the field
- Reports GPS location of modules to the gin for pickup
- Modules appear in Call-In book of eCotton software
- Allows producer to see bale summary information
- Requires gin to have CottonHost subscription



MODULE DISPATCHER

- Mobile app that allows module truck driver to see modules that need to be picked up
- Shows the driver GPS location and directions (if used in conjunction with MyModules)
- Allows driver to weigh in modules at the scale from the truck
- Requires gin to have CottonHost subscription

WHAT'S NEXT



- Tagless modules using RFID scanning instead
- Reporting enhancements for RFID data
- Enhancing Module Dispatcher for tagless modules
- Additional enhancements based on early adopter feedback

The background is a solid teal color. In the four corners, there are decorative white line-art elements resembling circuit traces or a network diagram, with lines connecting to small circles.

THANK YOU

Tom McCune and Scott Pinto

EWR, Inc.

81 Peyton Pkwy #101

Collierville, TN 38017

(901) 753-5026 Ext. 106

scott.pinto@ewrinc.com