

Kansas Boll Weevil Trapping Program

Rex Friesen, Ph.D.

Southern Kansas Cotton Growers Co-op, Inc.

Anthony, Kansas

Winfield, Kansas



Why Do We Need to Trap?

- **Undetected establishment and proliferation of boll weevils could cripple cotton as production option in Kansas**
- **Increasing acres, and therefore increasing value of cotton to growers and to the state**
- **Other cotton-producing states demanding it**

Kansas Acreage and Production

- Planted Acres

2013 = 27,000

2014 = 31,000

2015 = 16,000

2016 = 32,000

2017 = 93,000

2018 = 165,000

2019 = 107,000 (?)

2020 = ???

- Production (bales)

2013 = 41,000

2014 = 48,000

2015 = 35,000

2016 = 71,000

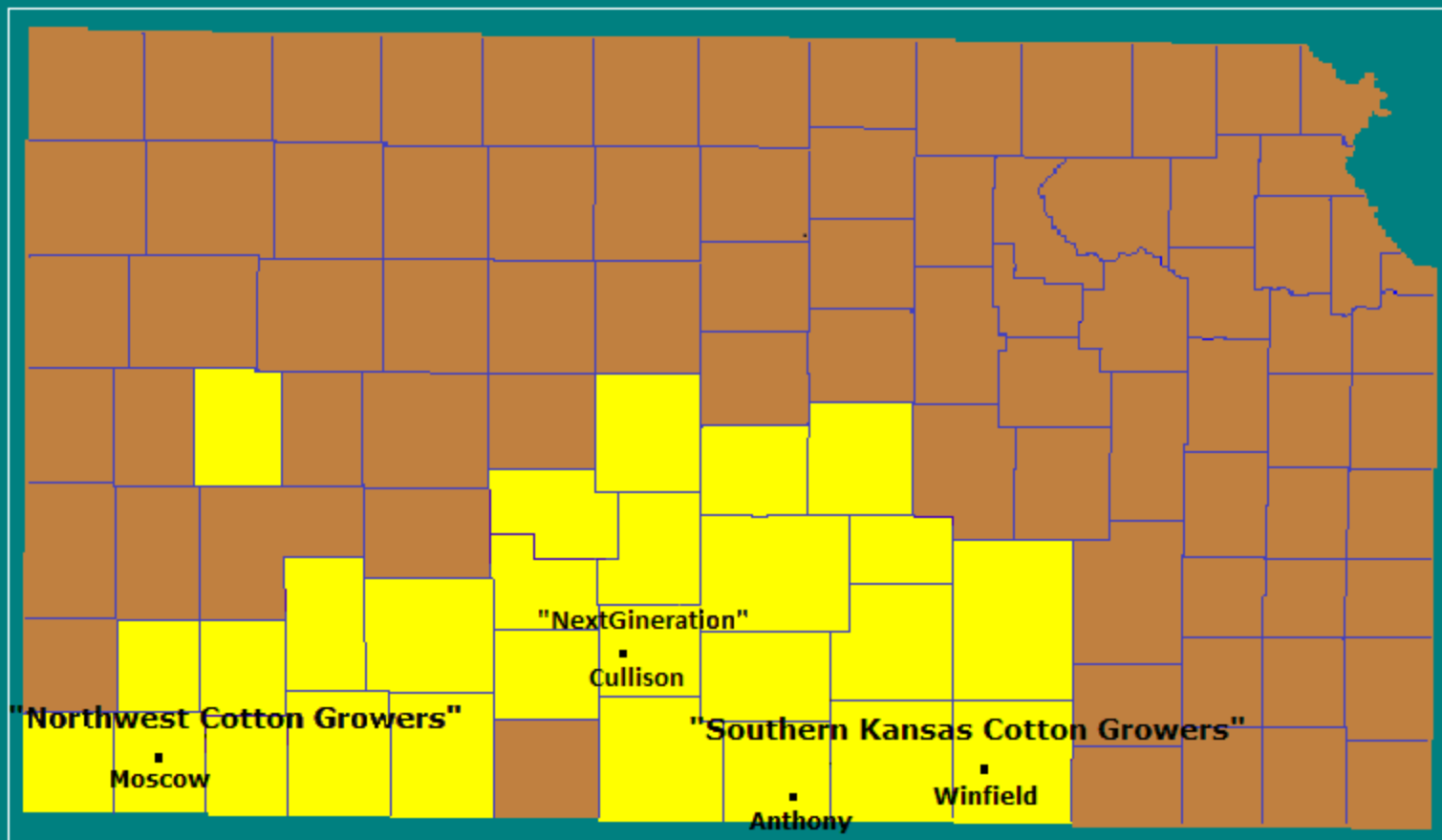
2017 = 197,000

2018 = 335,000 (est.)

2019 = 250,000 (?)

2020 = ???

KANSAS COUNTIES WITH CERTIFIED COTTON ACRES IN 2019

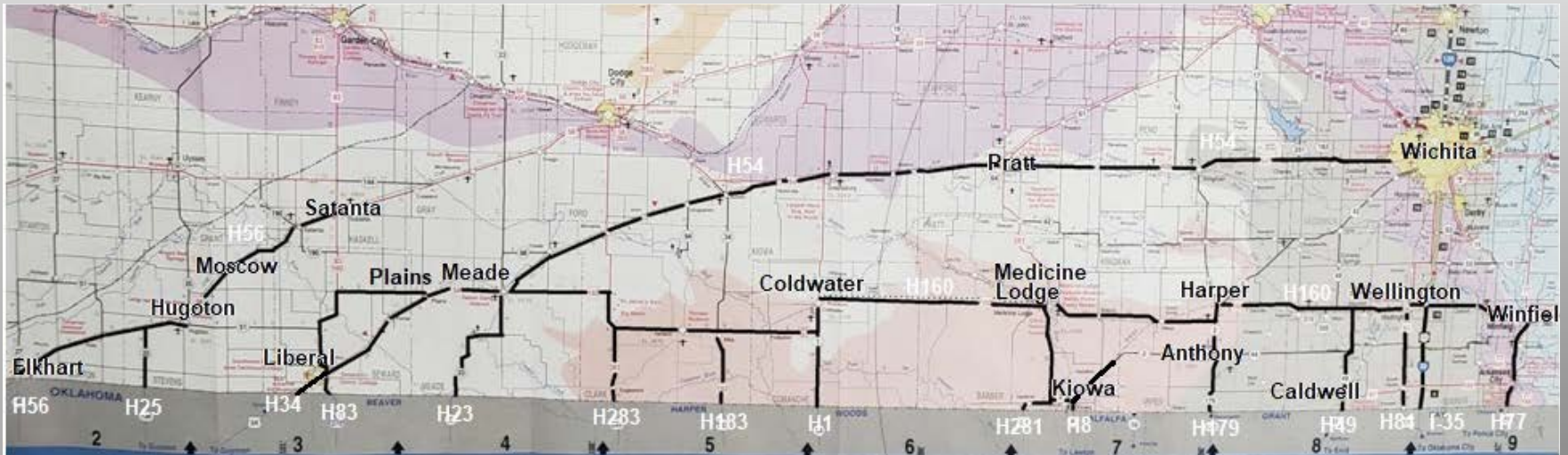


■ = Cotton Gin

2019 Trapping Program

- **KCA authorized Rex Friesen to coordinate program**
- **2 “trappers” were hired to place and service traps: 1 for western Kansas; 1 for SC Kansas**
- **198 Traps placed (140 traps along entry ports; 53 traps along East/West routes; 5 traps at gins, equipment dealerships)**
- **Traps were serviced every 3-5 weeks, from July thru December**
- **No Boll weevils captured**

2019 Trapping Program



Plans for 2020

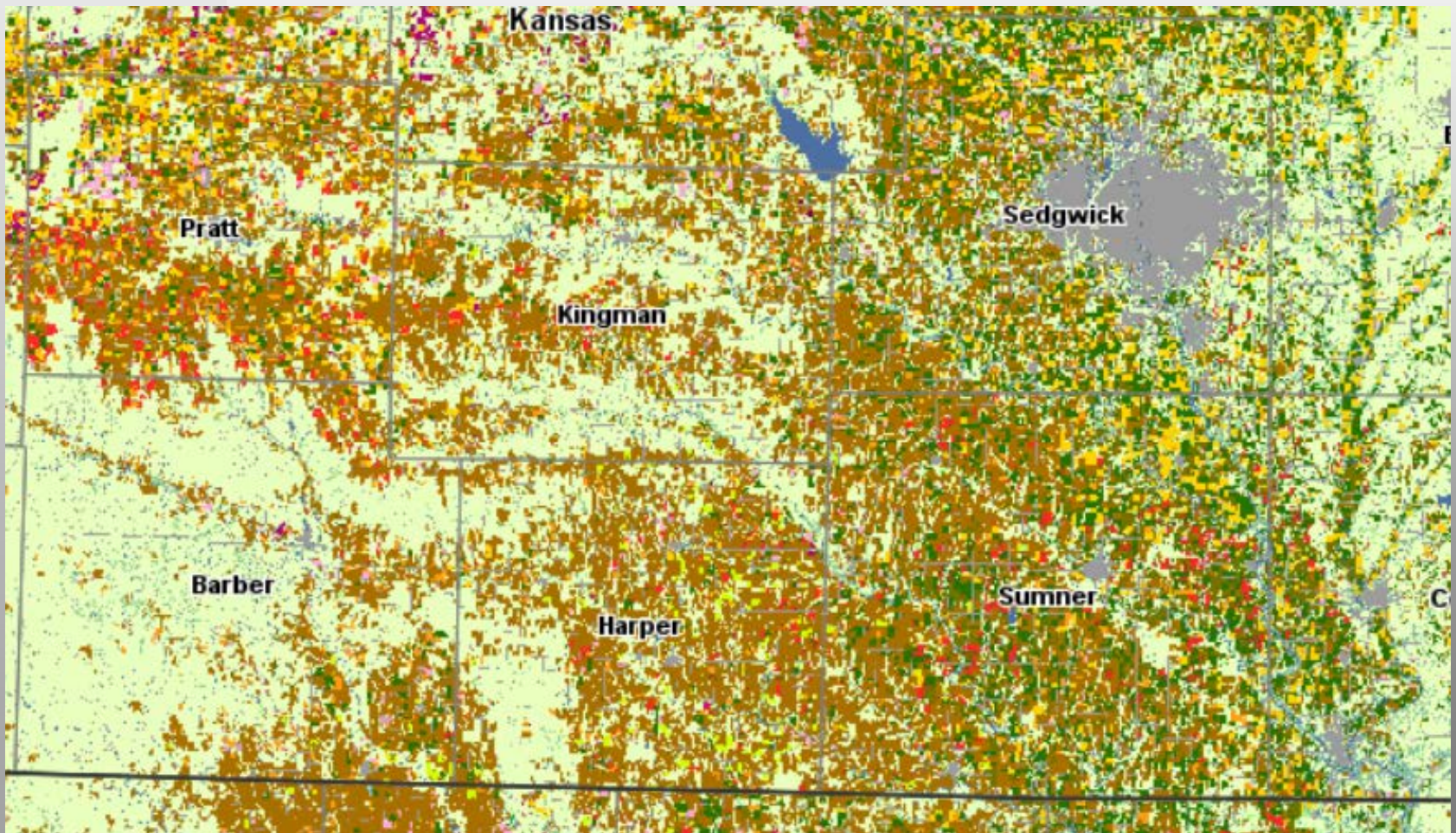
- **KCA continues working with NCC, Cotton Inc., and Texas and Oklahoma BWE Programs to develop program**
- **Aim for “Minimum Trapping Protocol” for trap placement and density**
- **Personnel**
- **Funding program through designated fees (per bale), collected at each gin**

Minimum Trapping Protocol

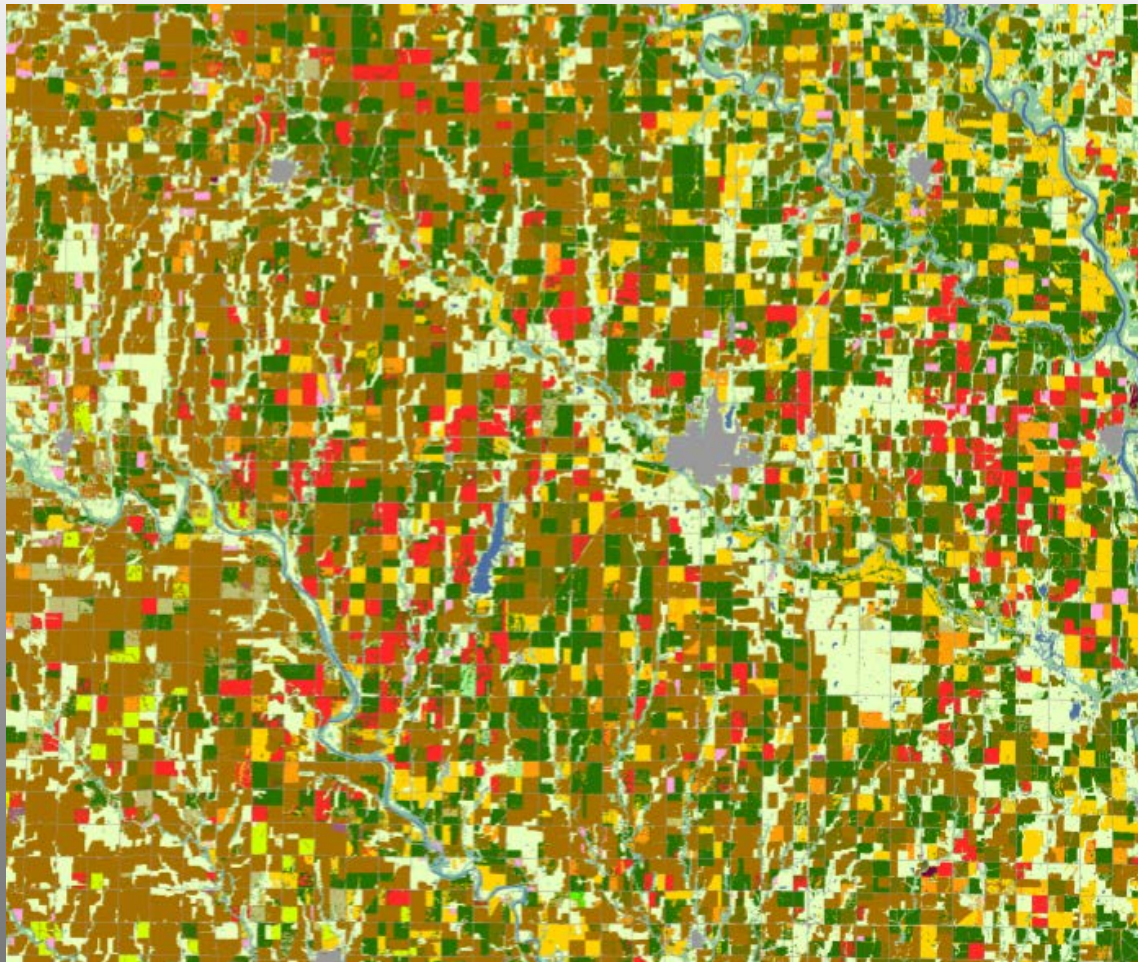
- 1 trap per section* with cotton field(s) in it.
- Traps placed in areas where cotton was located the year before (will use satellite images to locate last year's fields)

*1 trap can suffice for fields across the road from each other.

Cotton Fields in Central Kansas



Cotton Fields in Sumner County - 2019



Coming Soon to a field near you!

