

# RFID Utilization at Silver Creek Gin

By: Jonathan McBride



ENNIS TAG & LABEL  
34369336-2

MODULE  
TAG

# 31471

SILVER CREEK GIN CO.  
P.O. BOX 187  
HOLLY BLUFF, MS 39088

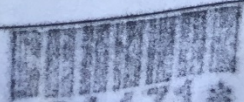


\*31471\*

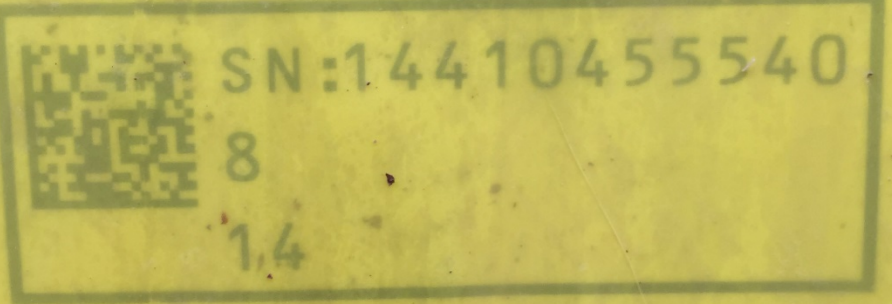
SILVER CREEK GIN CO., HOLLY BLUFF, MS

MODULE

DATE MADE 11-11  
PRODUCER P95  
FARM # 3762  
FIELD 1RR  
VARIETY \_\_\_\_\_  
ROUND 171 SQUARE \_\_\_\_\_  
PICKED BY \_\_\_\_\_



\*31471\*



SN:14410455540

8

14



**JOHN DEERE**

**RMW™**

9 Rolls of 24 Wraps each

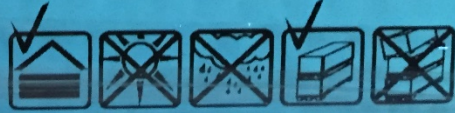
Total 216 Wraps

Tama Item #: 67242400

Pallet #: **4010061**



6724240040100619



MADE IN ISRAEL by TAMA PLASTIC INDUST

US patent No. 6727209 - US patent No. 7541090 - AU patent No. 77282 - 2005-000256 - China Patent No. ZL200380100224 X - China Patent No. ZL200580020614.5 - Israel patent No. 110547 - Israeli patent No. 163215 - India patent No. 254896 - South Africa patent No. 2005/0001237 - Brazilian patent No. P0307327.0 - Argentina patent No. ARO433281

**aRMW™**

**Embalagem para fardo  
cilíndrico de algodão**  
com Z-LOCK™ produto patenteado

**Especialmente projetado para John Deere**  
CP 7760, CP 690, CS 690



**JOHN DEERE**



Tama Item #: 67142400

Roll #: 1564040033093

No. of Wraps: 24



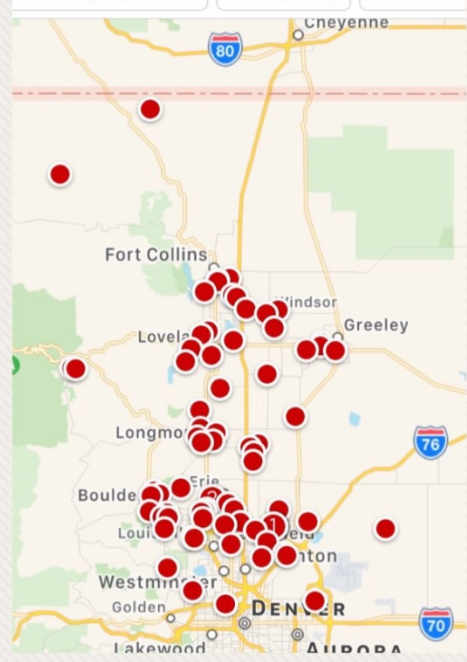
# Gin Advantages

- More efficient transfer of information – timeliness of receipt and entry, awareness of inventory location
- Eliminates handling tags within the gin
- Simplifies tagging logistics – Module trucks, flat beds – number of rounds per load
- Maintaining identity – tag cannot be lost apart from plastic removal

# Producer Advantages

- No tagging – less time & fewer tasks
- Maintaining Identity – a more objective and absolute system of accounting – each round bale is accounted for
- Marketing advantage – traceability - the opportunity to identify the origin of quality cotton

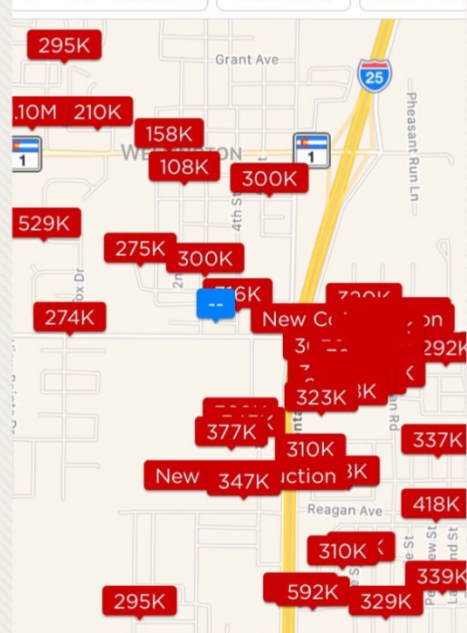
For Sale, Potential Price: Any Beds: An



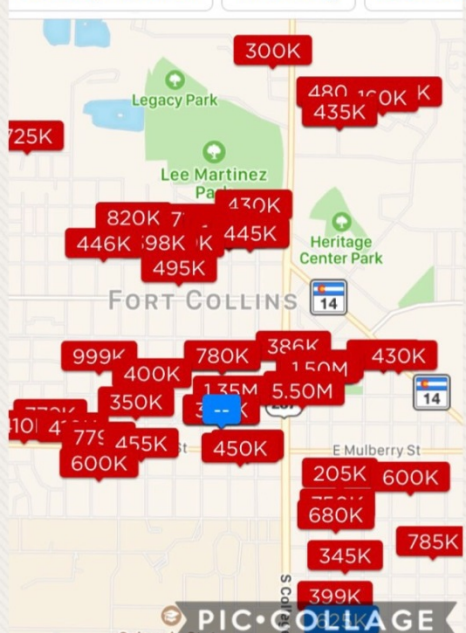
For Sale, Potential Price: Any Beds: An



For Sale, Potential Price: Any Beds: An



For Sale, Potential Price: Any Beds: An











USA Paper Mills  
1003849  
698000 1003849  
1003849  
1003849

USA Paper Mills  
1003848  
698000 1003848  
1003848  
1003848

USA Paper Mills  
1005147  
698000 1005147  
1005147  
1005147

USA Paper Mills  
1005146  
698000 1005146  
1005146  
1005146

# Contact Information

**Jonathan McBride**

662-571-7341

[jdmcbride77@gmail.com](mailto:jdmcbride77@gmail.com)